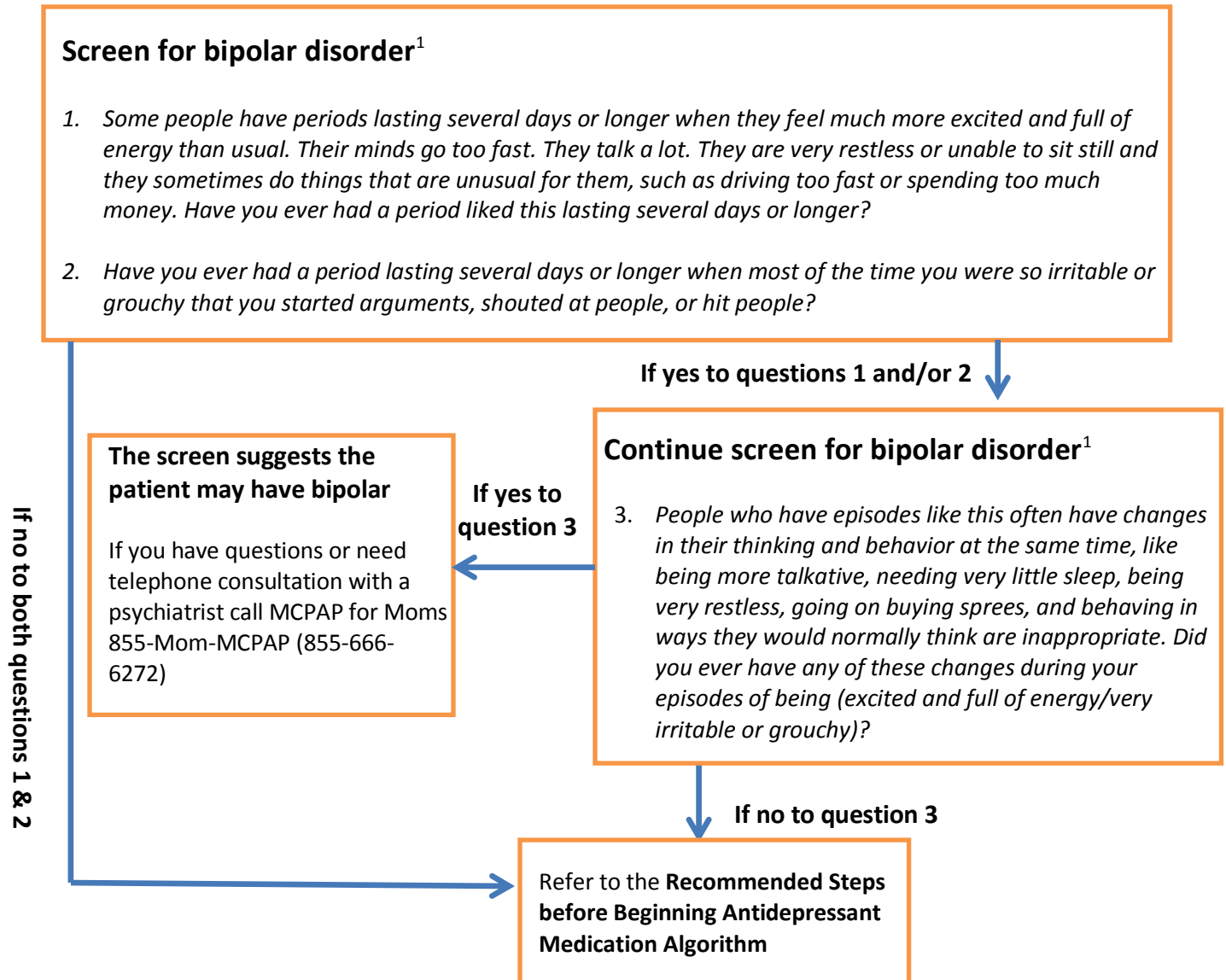


Bipolar Disorder Screen

This algorithm can be used when treatment with antidepressants is indicated, in conjunction with the **Depression Screening Algorithm for Obstetric Providers**.

In this algorithm, the provider *speaks the italicized text* and summarizes other text.



CALL MCPAP FOR MOMS WITH CLINICAL QUESTIONS THAT ARISE DURING SCREENING OR TREATMENT AT 855-666-6272

¹Taken from the Composite International Diagnostic Interview-Based Bipolar Disorder Screening Scale (Kessler, Akiskal, Angst et al., 2006)